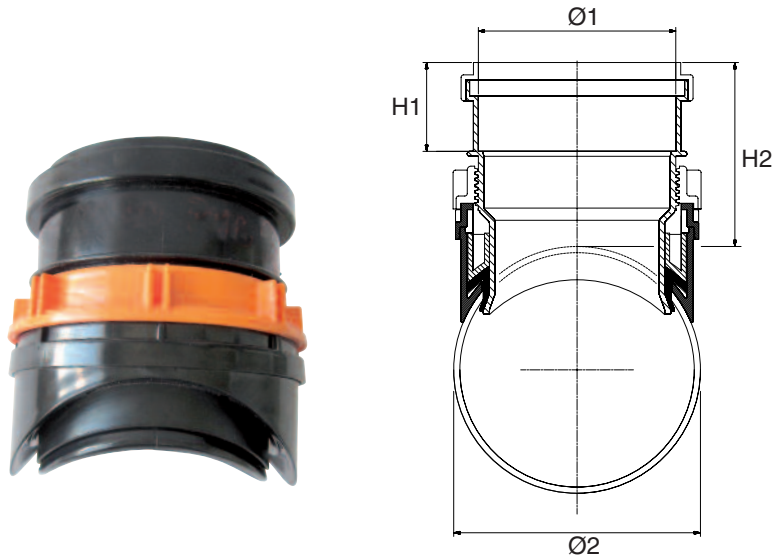
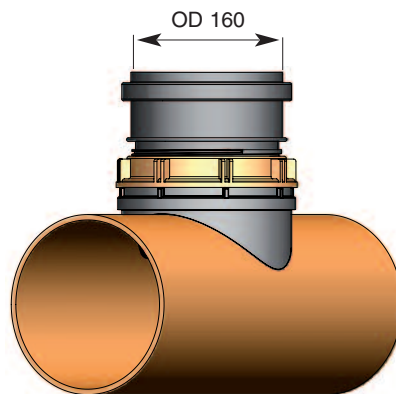


Mechanical saddle for PVC - PP - PE (smooth pipes) (Non-pressure underground drainage and sewerage)



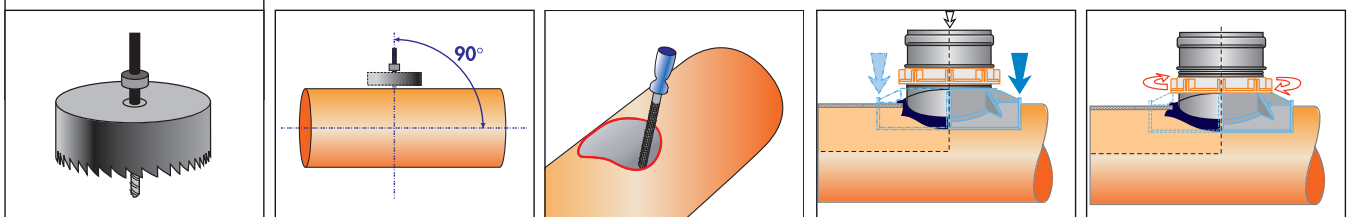
Ø1 (mm)	Ø2 (mm)	Code	€/pc.	H1 (mm)	H2 (mm)	Packing Box / Pallet
160	200	1431158	-	72	149	6 / 48

- Allows the connection to a smooth Ø200 pipe.
- Suitable for new and renovation.

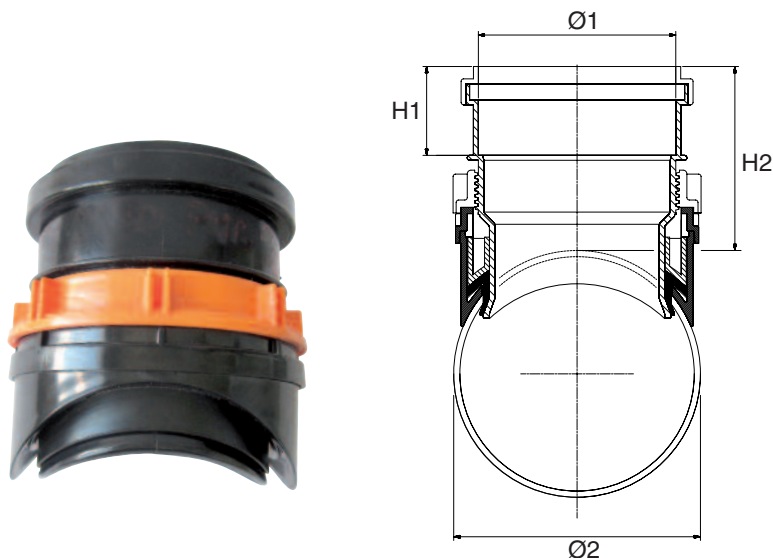


PVC - PP - PE smooth pipe Ø200:
3,2 mm ÷ 9,0 mm.

DRILLING TOOL
DN mm = 152 (6")
CODE = AD1513P

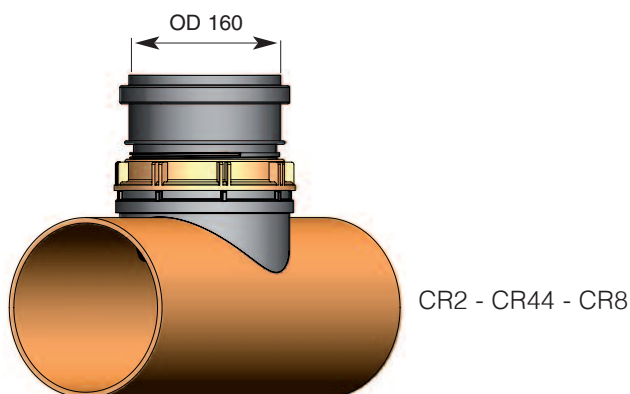


Piquage mécanique pour tube assainissement DN 200 en PVC, PE ou PP CR2 - CR4 - CR8 (Entrée DN 160 avec joint d'étanchéité)



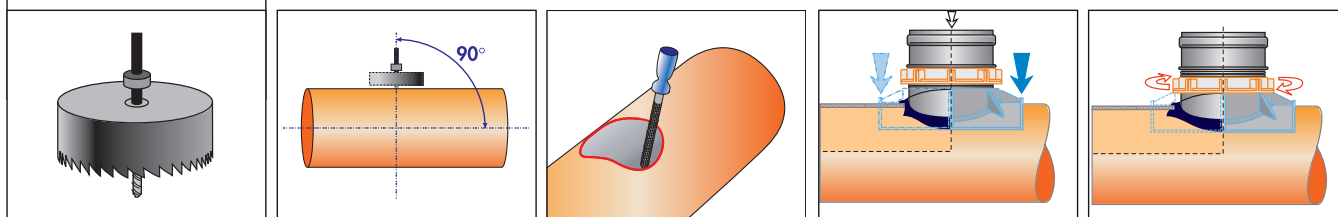
Ø1 (mm)	Ø2 (mm)	Réf.	€/pc.	H1 (mm)	H2 (mm)	Emballage Caisse / Palette
160	200	1431158	-	72	149	6 / 48

- Réalisation de piquage à 90° sans collage sur tubes plastiques lisses Ø200 (diamètre extérieur).
- La selle de piquage est munie d'un joint d'embout qui assure l'étanchéité par pression lors du serrage de l'écrou.

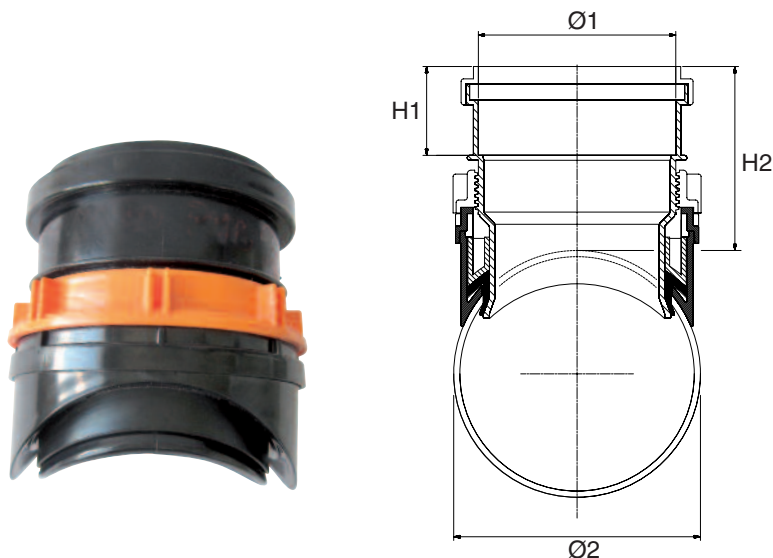


FRAISE

DN mm = 152 (6")
Réf. = AD1513P

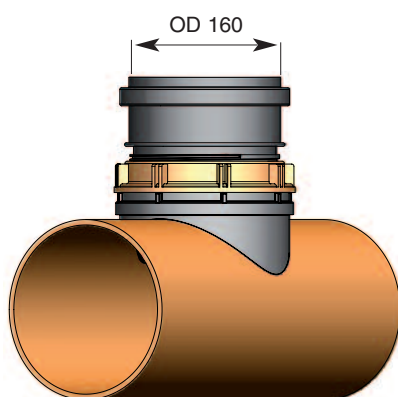


Anbohrstutzen für PVC - PP - PE Rohre (für glatte Rohre) (Drucklose Dränage und Abwasserkanalisation)



Ø1 (mm)	Ø2 (mm)	Art.Nr.	€/Stk.	H1 (mm)	H2 (mm)	Verpackung Karton / Pallet
160	200	1431158	-	72	149	6 / 48

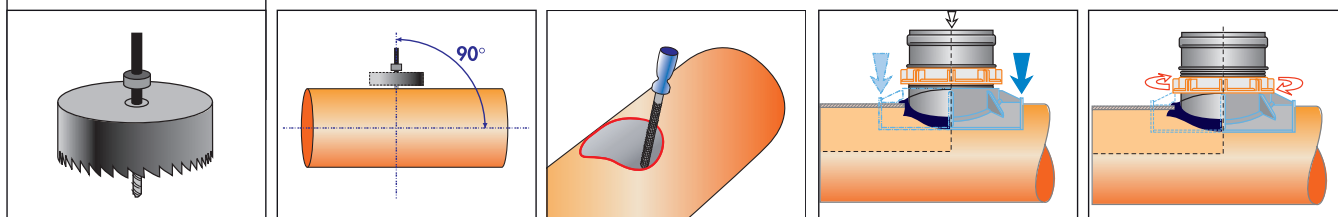
- Zur Erstellung eines Abzweiganschlusses 90° an ein Rohr DA 200 mm.
- Für Neubau und nachträglichem Anschluß geeignet.



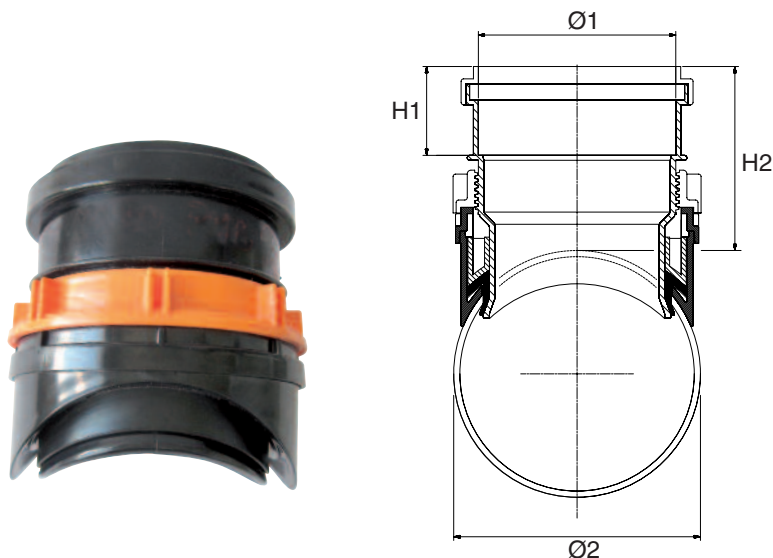
PVC - PP - PE glattes Rohr Ø200:
3,2 mm ÷ 9,0 mm.

BOHRKRONE

DN mm = 152 (6")
Art.Nr. = AD1513P

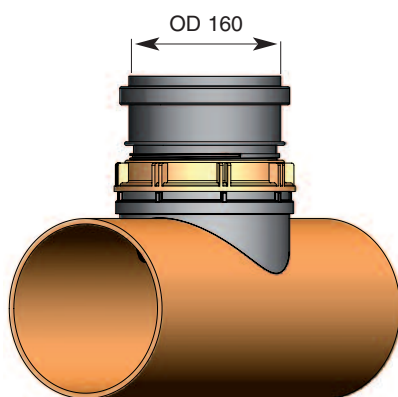


Clip Mecánica para tuberías en PVC - PP - PE (paredes lisas) (Redes de saneamiento / Alcantarillado)



Ø1 (mm)	Ø2 (mm)	Código	€/pz.	H1 (mm)	H2 (mm)	Embalajes Caja / Paleta
160	200	1431158	-	72	149	6 / 48

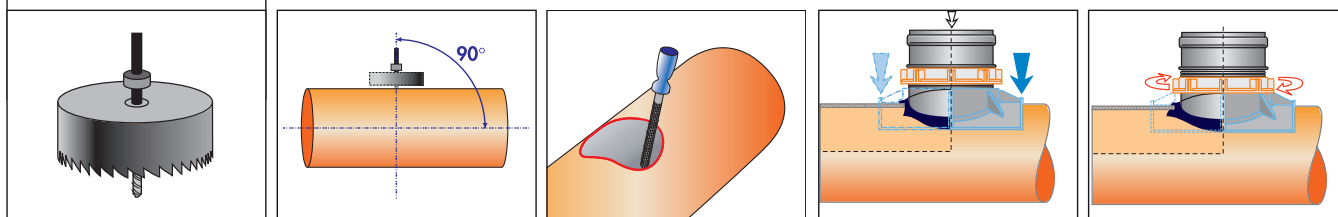
- Permite la conexión a tuberías Ø200 (pared lisa).
- Apto para redes nuevas y conexiones a redes existentes.



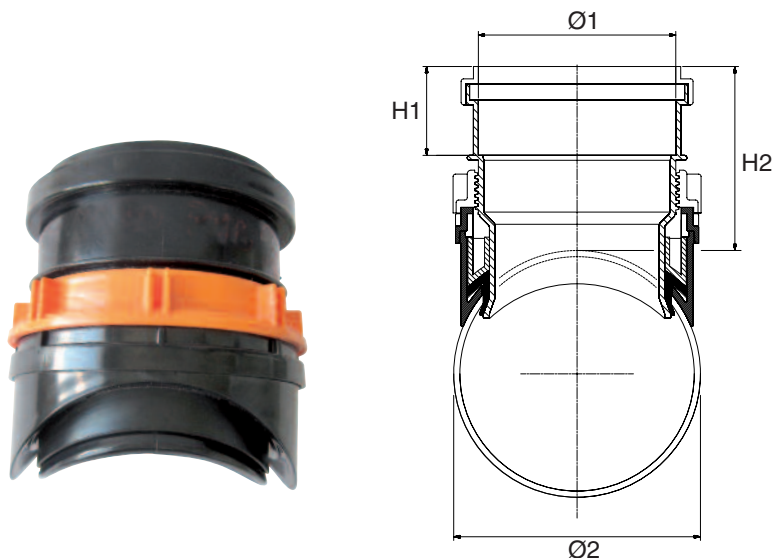
Tubería PVC - PP - PE Ø200:
3,2 mm ÷ 9,0 mm.

PERFORACIÓN

DN mm = 152 (6")
Código = AD1513P

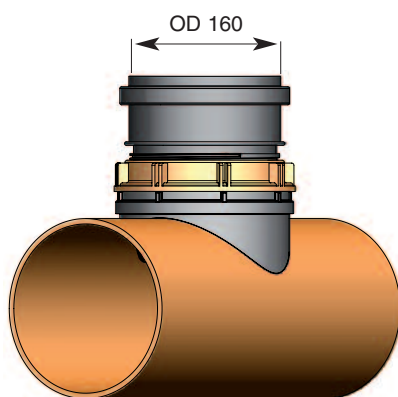


Clip Meccanica per tubi in PVC - PP - PE (parete liscia) Per reti fognarie bianche e nere



Ø1 (mm)	Ø2 (mm)	Codice	€/pz.	H1 (mm)	H2 (mm)	Imballo Max / Min.
160	200	1431158	-	72	149	6 / 48

- Consente l'allaccio ad un tubo plastico liscio Ø200.
- adatto al nuovo o nel caso di condotte esistenti.



PVC - PP - PE tubo liscio Ø200:
3,2 mm ÷ 9,0 mm.

**SEGA A TAZZA
PER FORATURA**
DN mm = 152 (6")
Código = AD1513P

