

## Ventilazione di colonna

**Ario** valvola a immissione aria, aeratori a membrana, testata esalatrice

# Guida alla scelta dei prodotti per la ventilazione della colonna di scarico

## Products for ventilation of the waste system:

- ARIO
- Aerator membrane
- Exhaling vent cowl
- Air admittance valve for siphon bathroom/kitchen

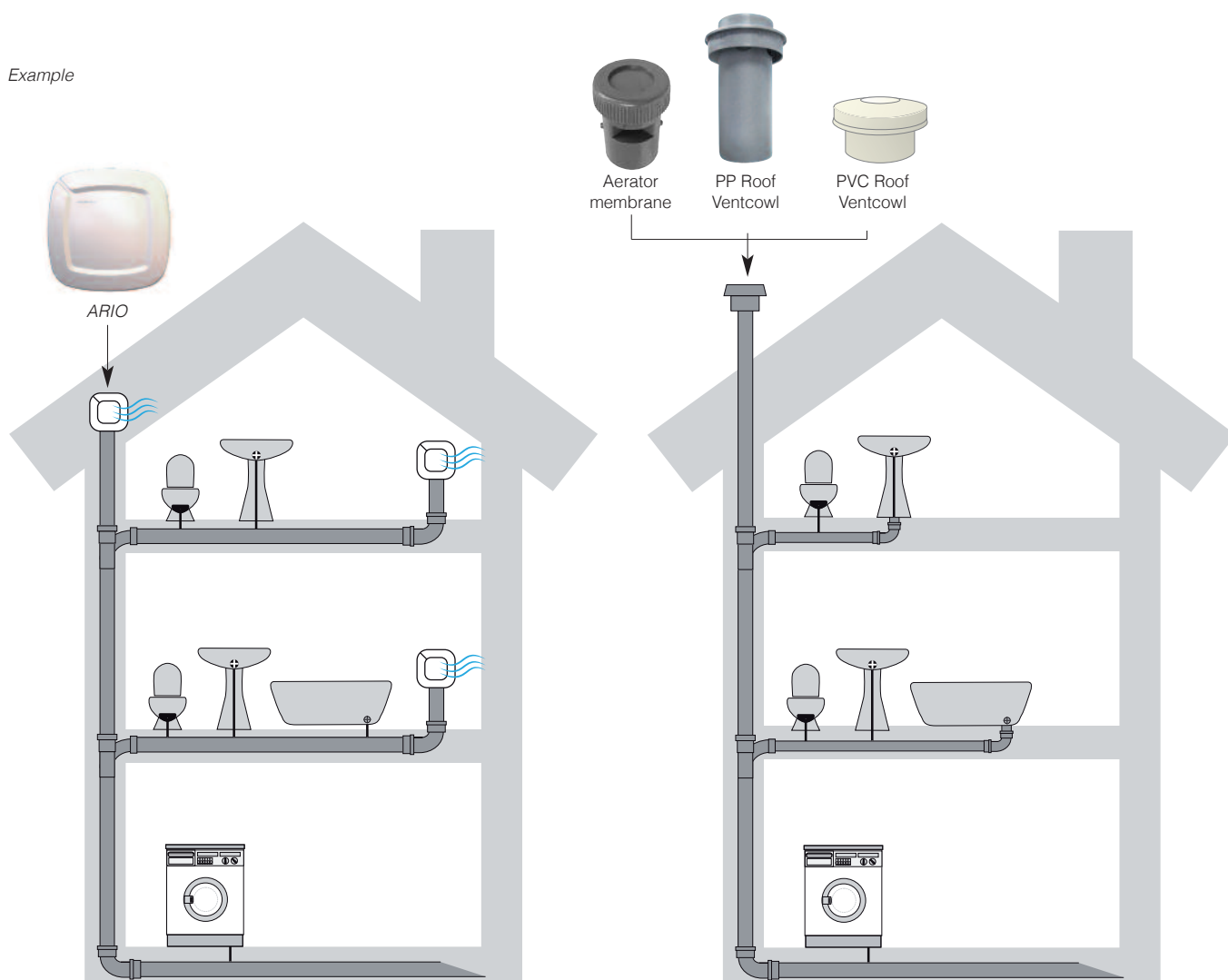
## What are they used for:

- To eliminate bad smells, to avoid siphon's emptying
- To reduce drainage rumors
- To improve the drainage capacity
- To speed the discharge process

## Norms:

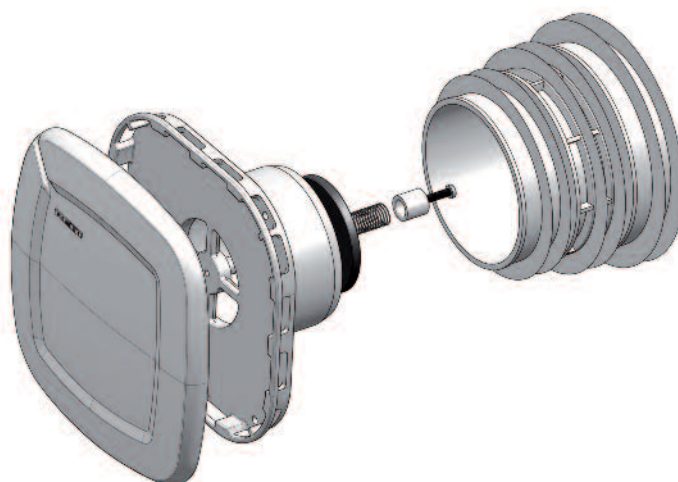
- EN 12056 Air admittance valve systems
- EN 12380 Air admittance valves

Example



# Ario

advanced concept for the ventilation of the drainage system







Bianco



Testa di moro



Design

Packaging



## ARIO, Air Inlet Valve (adaptor required)

Clapet équilibré de pression Válvula recambio aire

Ensure venting and protection against the loss of water seals in traps

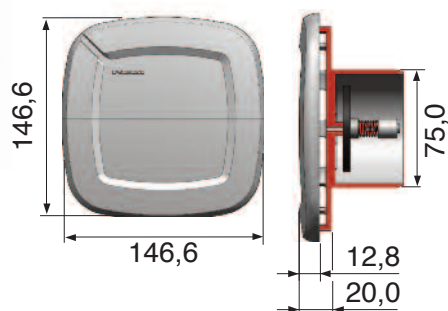
Dim.	Codice Ref.	€/pz	Imb /Pack Max./Min.	Type	Note
146,6 x 146,6	169000W	48,31	306 / 9	White	guarnizione inclusa
146,6 x 146,6	1690007	48,31	306 / 9	Brown	guarnizione inclusa
146,6 x 146,6	169000D	*	9	*Design	guarnizione inclusa

\*Available on request for minimum order.

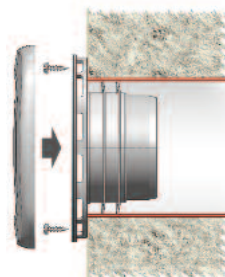
### EN 12380 CE<sup>10</sup>

- Description: **A II**
- Airflow rate: **14 l/s**
- Air tightness tested at: **10 KPa**
- Temperature range: **da 0°C a 60°C**
- Effectiveness at low temperature (below zero): **NPD**

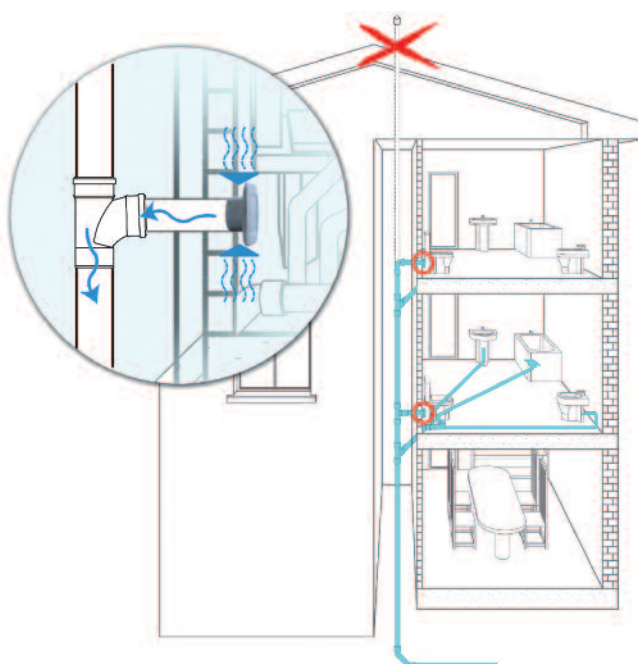
Adaptor required: Ø84÷95; Ø94÷104; Ø104÷110



Adaptor



Installation

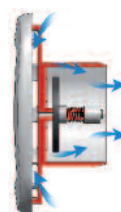


Functioning



#### OFF

Normally closed valve



#### ON

Activated valve



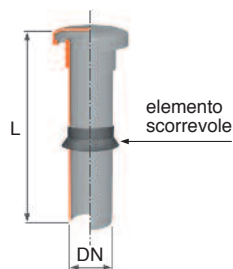
### Membrane Aerator Aérateur à membrane

DN (mm)	Codice Ref.	€/pz	Imb. / Pack	Note
40/32	WAM430M	<b>37,08</b>	10	NOVITÀ
80 -75	WAM870M	<b>55,89</b>	6	
110 - 100	WAM110M	<b>76,55</b>	6	



### Ventipipe PP

DN (mm)	Codice Ref.	€/pz	Imb. / Pack Max./Min.	L	Materiale	Note
50	Z7950PP	<b>38,97</b>	10	800	PP	Versione lunga
75	Z7975PP	<b>43,19</b>	5	800	PP	Versione lunga
110	Z7911PP	<b>48,67</b>	5/45	800	PP	Versione lunga
50	Z8050PP	<b>35,19</b>	20	280	PP	Versione corta
75	Z8075PP	<b>38,97</b>	10	280	PP	Versione corta
110	Z8011PP	<b>44,22</b>	10	280	PP	Versione corta



### Testata esalatrice in PVC



DN	Codice / Ref.			€/pz	Imb. / Pack		Note
	Avorio	Arancio	T. Moro		Max	Min.	
40	1690403	-	-	≈	-	5	≈ vedi Listino Edilizia pag. 29
50	1690503	-	-	≈	-	5	≈ vedi Listino Edilizia pag. 29
63	1690603	-	-	≈	-	5	≈ vedi Listino Edilizia pag. 29
75*	1690702	-	-	≈	-	20	≈ vedi Listino Edilizia pag. 29
80	1690803	-	1690807	≈	-	5	≈ vedi Listino Edilizia pag. 29
82	1698203	-	-	≈	-	5	≈ vedi Listino Edilizia pag. 29
100	1691003	1691009	1691007	≈	-	10	≈ vedi Listino Edilizia pag. 29
110	1691103	-	-	≈	-	10	≈ vedi Listino Edilizia pag. 29
125	1691203	-	1691207	≈	-	10	≈ vedi Listino Edilizia pag. 29
140	1691403	-	-	≈	-	10	≈ vedi Listino Edilizia pag. 29
160	1691603	-	-	≈	-	10	≈ vedi Listino Edilizia pag. 29

\* Solo grigio